

## PNEUMATIC CLINCHING TOOL



- Length:** 43.0 cm (16.93")
- Width:** 9.0 cm (3.54")
- Height:** 16.0 cm (6.3")
- Weight:** 3.21 kgs
- Air Press:** 90 ~ 120 PSI ( 6 - 8 bars)



**Popular Application:**  
Spring Mattress  
Poultry Cage Assembling  
Cable Assembling

**Model: AF54A / AF55A / AF56A**  
(Sharp Head of Anvil)



**Popular Application:**  
Razor Wire / Fence Installation /  
Poultry cages assembling

## MANUAL CLINCHING PLIER



- Length:** 51.6 cm (20.31")
- Width:** 65.2 cm (25.67")
- Height:** 7.2 cm (2.83")
- Weight:** 2.0 kgs
- Magazine Load Q'ty:** 25 - 44 PCS
- Popular Application:** Poultry cages assembling  
cable assembling, Fence Installation

### WIDE RANGE CLIPS FOR YOUR APPLICATIONS

Tool Model		U	H	W	22	19	11		
Pneumatic	Manual Plier								
AF 01	AF 01H	4.8	12.7	CL-23	CL-73				
			15.5					CL-24	CL-74
AF 02	AF 02H	6.2	12.3	CL-03	CL-71				
			14.1					CL-04	CL-72
			15.5						CL-05
AF 03	AF 03H	6.8	17.1	CL-34					
AF 05	AF 05H	8.4	21.4	CL-38					
AF 06	AF 06H	7.0	18.5			CL-75			
AF 31	AF 31H	4.8	10.7				CL-13		
			12.7				CL-17		
AF 32	AF 32H	5.8	13.3				CL-18		
AF54/AF54A	AF54H / AF54AH	10.0	19.0				CL-39		
			17.0				CL-37		
AF55 / AF55A	AF55H / AF55AH	10.0	15.0				CL-35		
AF56/AF56A	AF56H/AF56AH	10.0	13.0				CL-33		

## ROLL FED FRAME AFF01

**Length:** 1500 mm ( 59")

**Width:** 900 mm (35.4")

**Height:** 2400 mm (94.49")

**Weight:** 46 kgs (Not including tool and clips)

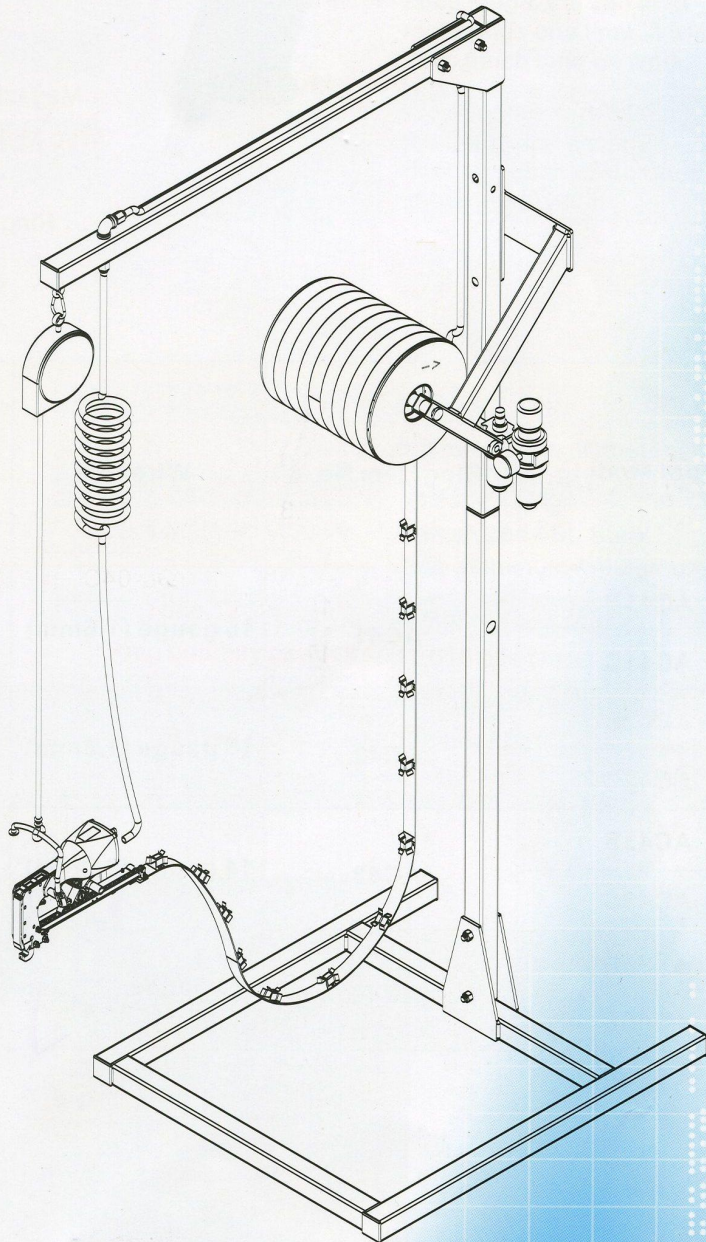
**Magazine Capacity:** 10,000 to 15,000 clips

**Application:** Apply clips from a continuous clip coil at an average rate of 15,000 clips.

**Features:** ※ Easy-load feed rail for faster loading and less downtime.  
※ Roll clip feed with up to at least 10,000 clips per roll.



Coil Clip



## PNEUMATIC ROLL FED CLINCHING TOOL



Length: 36.53 cm (14.38")

Width: 28.42 cm (11.19")

Height: 16.92 cm (6.66")

Weight: 3.6 kgs

Air Press: 90 ~ 120 PSI ( 6 - 8 bars)

Popular Application: Poultry Cages Assembling /  
Mattress / Cable Assembling

Tool				Tool		
AF 01C	4.8	12.7	CL-23C	AF 01B	CL-73C	
		15.5	CL-24C		CL-74C	
AF 02C	6.2	12.3	CL-03C	AF 02B	CL-71C	
		14.1	CL-04C		CL-72C	
		15.5			CL-05C	
AF 03C	6.8	17.1	CL-34C			
	7.0	18.5		AF 06B	CL-75C	
AF 05C	8.4	21.4	CL-38C			
AF 31F	4.8	10.7				CL-13C
		12.7				CL-17C
AF 32F	5.8	13.3				CL-18C
AF 54F	10.0	19.0				CL-39C
		17.0				CL-37C
AF 55F	10.0	15.0				CL-35C
AF 56F	10.0	13.0				CL-33C

## ROLL FED FRAME AFF01

Length: 1500 mm ( 59")

Width: 900 mm (35.4")

Height: 2400 mm (94.49")

Weight: 46 kgs (Not including tool and clips)

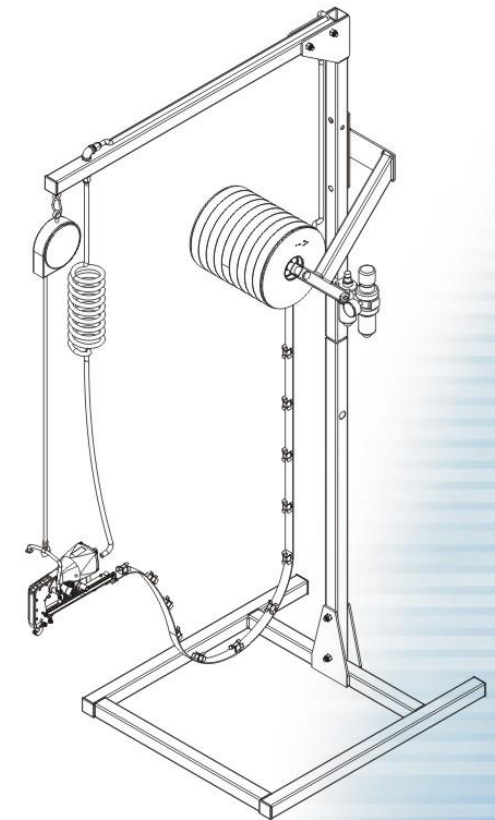
Magazine Capacity: 10,000 to 15,000 clips

Application: Apply clips from a continuous clip coil  
at an average rate of 15,000 clips.

Features: ※ Easy-load feed rail for faster loading and less downtime.  
※ Roll clip feed with up to at least 10,000 clips per roll.

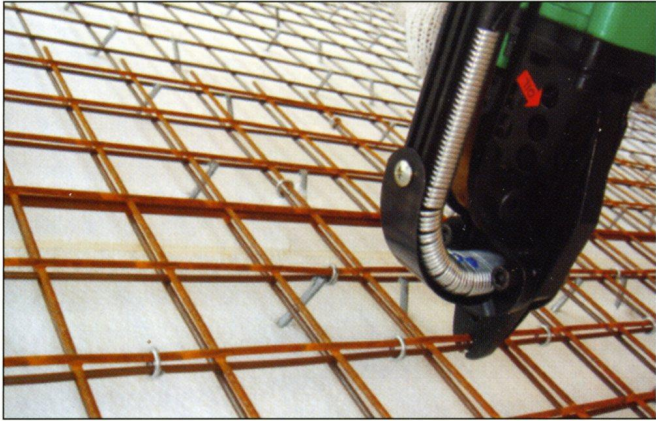


Coil Clip



## Popular Application

Fencing / Packaging / Bag Closure / 3D Panel / Animal Cages Assembling, Cable Assembling...



Razor Wire