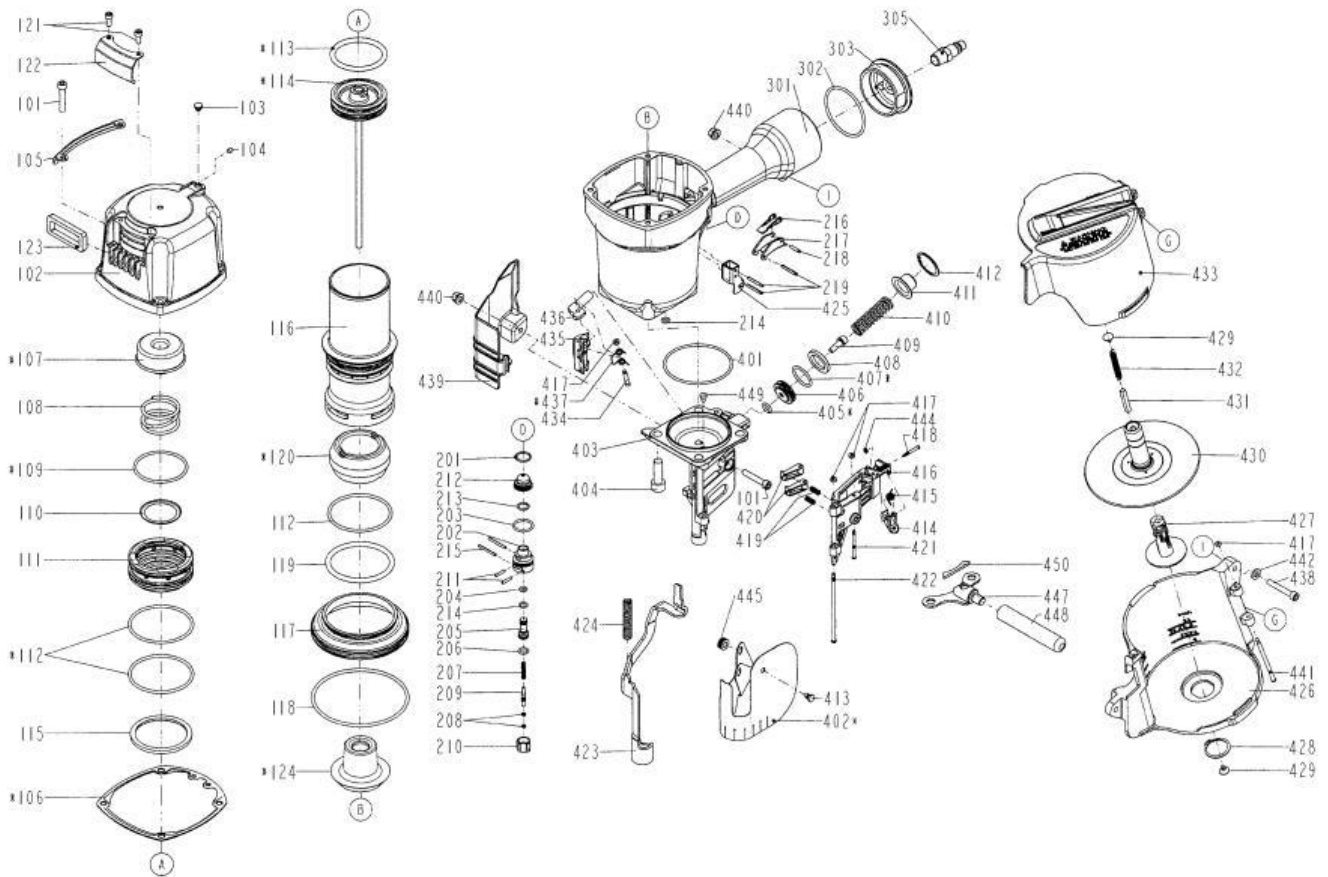


DIAGRAM OF MON/CNW38-100EPAL/CE



ITEM NO.	PART NO.	DESCRIPTION	ITEM NO.	PART NO.	DESCRIPTION	ITEM NO.	PART NO.	DESCRIPTION
101	2040101-04121-2	HEX.SOC.HD.BOLT	210	11373-0860001-1	TRIGGER VALVE HEAD	420	11358-0864701-1	NAIL STOP
102	11369-1031301-1	CAP	211	11329-0860001-1	PIN	421	11359-1034701-1	PIN-NAIL STOP
103	1135S-0350001-1	GROMMET	212	1137A-0860001-1	COVER-PLUNGER	422	11362-1034701-1	DOOR SHAFT PIN
104	2040104-03010-0	HEX.SOC.HD.SCREW	213	2041104-02070-0	O - RING	423	11330-1034701-1	SAFETY
105	11397-1034701-1	GUIDE COVER	214	2041100-01050-0	O - RING	424	11337-1030001-1	SAFETY SPRING
106	11302-1034701-1	CYLINDER CAP SEAL	215	2040401-05150-0	SPIRAL PINS	425	11338-0864701-2	SAFETY GUIDE
107	11370-1030001-1	SEAL	216	11317-0864701-2	SECONDARY TRIGGER	426	11238-1034701-1	MAGAZINE CASE
108	11360-1030001-2	COMPRESSION SPRING	217	11316-0864701-3	TRIGGER	427	11357-1034703-1	MAGAZINE POST
109	2041108-06050-0	O - RING	218	2040401-05080-0	SPIRAL PINS	428	1138Y-0864701-1	RUBBER RING
110	11381-1030001-1	WASHER	219	2040401-05120-0	SPIRAL PINS	429	1134M-0864701-1	SPRING BASE
111	11368-1030001-1	HD.VALVE PISTON	301	11230-103H801-1	GUN BODY UNIT	430	11289-1030001-1	SPACER
112	2041108-07050-0	O - RING	302	2041101-05020-0	O - RING	431	1138W-0860001-1	SPACER
113	2041100-06011-0	O - RING	303	11346-0861302-1	END CAP	432	11328-0970001-1	PULL SPRING
114	11204-1030002-1	DRIVER UNIT	306	1135R-0864701-1	PROTECTIVE CUSHION	433	11355-1034701-1	MAGAZINE COVER
115	11399-1030001-1	COLLAR	401	2041104-08020-0	O - RING	434	11365-0864701-1	PIN FEED PISTON
116	11320-1030003-1	CYLINDER	402	11383-1030001-1	MUZZLE PROTECTOR	435	11306-1034702-1	FEED FINGER
117	11321-1030001-1	CYLINDER SPACER	403	11382-1034702-3	NOSE PIECE	436	11364-0974701-1	FEED PISTON-A
118	2041104-11010-0	O - RING	404	2040101-06010-2	HEX.SOC.HD.BOLT	437	11307-0970001-1	FEED FINGER SPRING
119	2041108-07060-0	O - RING	405	2041100-01091-0	O - RING	438	2040101-04131-0	HEX.SOC.HD.BOLT
120	11327-1034702-1	BUMPER-A	406	11364-0974702-1	FEED PISTON-B	439	1134R-1034701-1	SPRING COVER
121	2040101-03050-9	HEX.SOC.HD.BOLT	407	2041104-03040-0	O - RING	440	2040501-04010-0	BOLT CAP
122	11371-1034701-1	DEFLECTOR	408	1134W-0970001-1	FEED BUMPER	441	1136R-1034701-1	MAGAZINE SHAFT PIN
123	1132T-1030001-1	MUFFLER	409	2040100-04080-2	BOLT ASSY	442	2040202-04010-0	FLAT WASHER
124	11327-1034703-1	BUMPER-B	410	11367-1030001-1	PUSHER SPRING	444	1131D-0460001-1	URETHANE RETAINER
201	2041104-02060-0	O - RING	411	11366-0974701-1	FEED PISTON CAP	445	1135U-1010001-1	PROTECTOR WASHER
202	11374-0860001-1	PLUNGER CAP	412	2040300-08010-0	C - RING	447	1120K-1034701-1	SECOND HANDLE BASE UNIT
203	2041100-02050-0	O - RING	413	1134B-0864701-1	DUST SHIELD PLUG	448	1137K-1030001-2	HANDLE
204	2041100-01070-0	O - RING	414	11310-0254702-2	LOCK LEVER	449	1135S-1034701-1	GROMMET
205	1133S-0860001-1	VALVE PLUNGER	415	11311-1030001-1	LATCH SPRING	450	1135G-1114701-1	RUBBER PAD
206	2041100-01030-0	O - RING	416	11361-1034702-1	DOOR			
207	11376-0860001-1	SPRING	417	1135H-0860001-1	PU RETAINER			
208	2041108-01020-0	O - RING	418	1131K-1034701-1	PIN			
209	11375-0860002-1	PLUNGER	419	1133C-0860001-1	STOPPER FINGER SPRING			
2014.06.04								MON/CNW38-100EPAL/CE