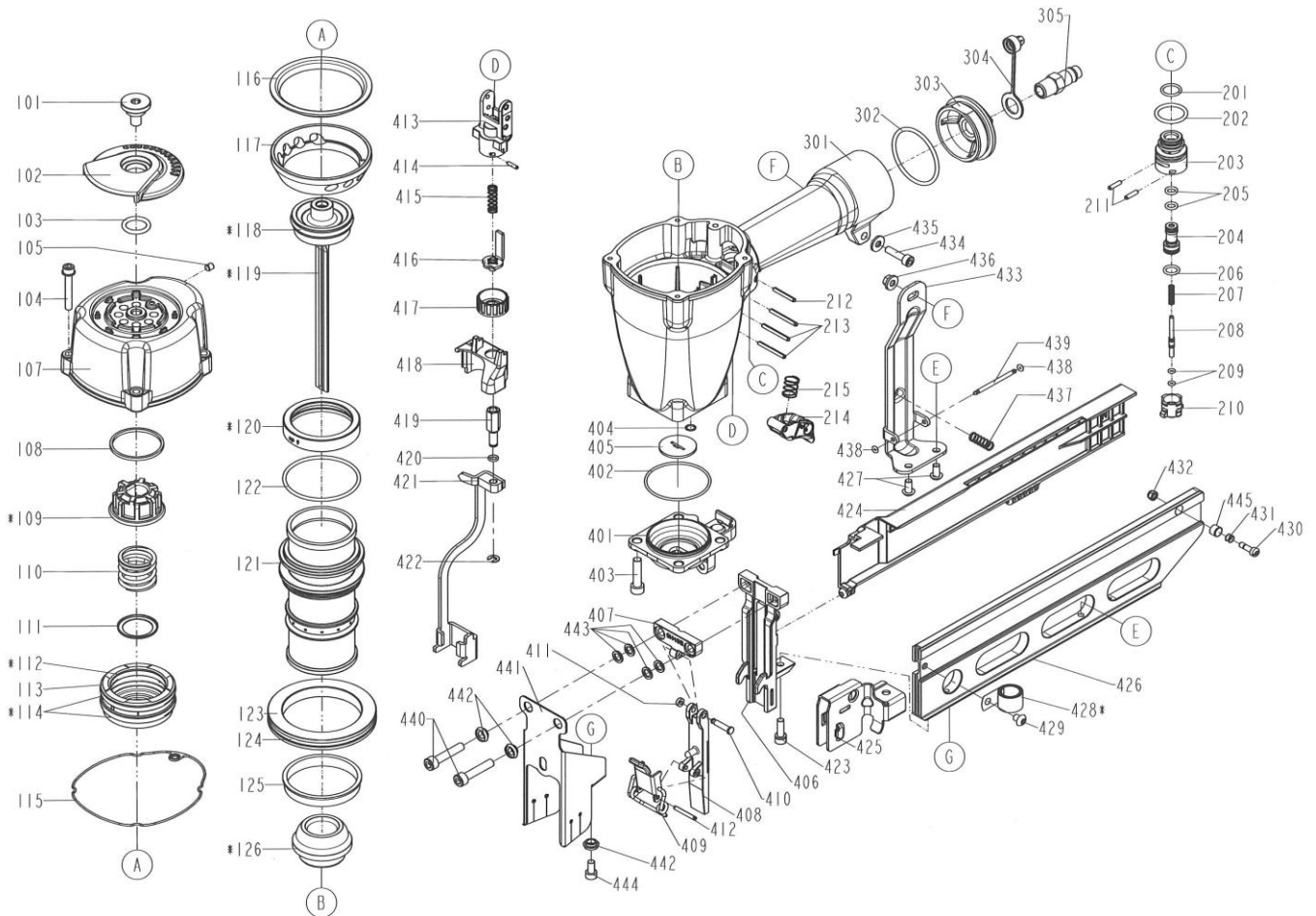


DIAGRAM OF MON/S16/965-A1/CE



ITEM NO.	PART NO.	DESCRIPTION	ITEM NO.	PART NO.	DESCRIPTION	ITEM NO.	PART NO.	DESCRIPTION
101	1136B-0374702-1	DEFLECTOR PAD	209	2041102-01030-0	O - RING	422	2040302-24010-0	E - RING
102	11371-0374704-1	DEFLECTOR	210	11373-0084701-1	TRIGGER VALVE HEAD	423	2040100-03010-2	BOLT ASSY
103	2041106-02010-0	O - RING	211	2040400-05060-0	SPRING PIN	424	11348-2004701-2	MOUNTING BRACKET
104	2040100-03220-0	BOLT W/FLAT WASHER	212	2040400-05110-0	SPRING PIN	425	11363-2004701-1	PUSHER
105	2040104-03010-0	HEX.SOC.HD.SCREW	213	2040400-05160-0	SPRING PIN	426	11389-2004701-1	MAGAZINE A
107	11369-0984301-1	CAP	214	11224-0764701-1	TRIGGER UNIT	427	2040102-03020-2	HALF ROUND HD.HEX.BOLT
108	11381-0950001-1	WASHER SEAL	215	11376-0370001-1	SPRING	428	11372-0980001-1	SPRING
109	11370-0950001-1	SEAL	301	11230-109H802-3	GUN BODY UNIT	429	2040102-03120-0	HALF ROUND HD.HEX.BOLT
110	11360-1010001-1	COMPRESSION SPRING	302	2041109-05050-0	O - RING	430	11310-0094702-1	DOOR LATCH
111	11381-0950002-1	WASHER	303	11346-0084303-1	END CAP	431	11311-0074701-1	LATCH SPRING
112	2041108-05070-0	O - RING	304	1132L-0014701-2	DUST COVER	432	2040500-02020-0	LOCK NUT
113	11368-1010001-2	HD.VALVE PISTON	305	1135V-0000003-1	AIR PLUG	433	11323-1174701-1	POSITIONING SHEET
114	2041104-06050-0	O - RING	401	11326-0984701-1	BASE	434	2040101-03100-0	HEX.SOC.HD.BOLT
115	1132M-1094701-1	PACKING	402	2041104-05020-0	O - RING	435	2040202-03010-0	FLAT WASHER
116	1136D-0984701-1	PRESS RING	403	2040101-04090-2	HEX.SOC.HD.BOLT	436	2040501-03040-0	BOLT CAP
117	1131E-0084701-3	CYLINDER PRESS RING	404	2041109-01060-0	O - RING	437	11337-0074701-1	SAFETY SPRING
118	2041100-05062-0	O - RING	405	11388-1384701-1	DRIVER GUIDE	438	1135H-1314701-1	PU RETAINER
119	11204-2000001-1	DRIVER UNIT	406	11303-2004701-1	DRIVER GUIDE	439	1135N-0074701-1	HINGE POINT
120	11399-1014701-1	COLLAR	407	11353-1174701-2	DRIVER GUIDE COVER B	440	2040101-04111-2	HEX.SOC.HD.BOLT
121	11320-1050001-1	CYLINDER	408	11352-1174701-2	DRIVER GUIDE COVER A	441	11383-2000001-1	MUZZLE PROTECTOR
122	2041109-06020-0	O - RING	409	11244-0074701-1	LOCK HANDLE UNIT	442	113BF-0074701-1	SPACER RING
123	11321-0080006-1	CYLINDER SPACER	410	1130U-0254701-2	FEED FINGER PLUG	443	2040201-04080-0	FLAT WASHER
124	2041104-08010-0	O - RING	411	1135H-0790001-1	PU RETAINER	444	2040101-03040-2	HEX.SOC.HD.BOLT
125	11322-0764701-1	CYLINDER RING	412	2040401-05110-0	PIN COILED	445	1132N-0820001-1	DEEP IMPACT SOCKET 1
126	11327-0764702-1	BUMPER	413	11338-0764701-1	SAFETY GUIDE			
201	2041104-02020-0	O - RING	414	2040400-04050-0	SPRING PIN			
202	2041104-02030-0	O - RING	415	11337-0084701-1	WORK CONTACT ELEMENT SPRING			
203	11374-0084701-1	PLUNGER CAP	416	11332-0794705-1	SAFETY B			
204	1133S-0250001-1	VALVE PLUNGER	417	11393-0761101-2	ADJUST AXIE			
205	2041100-01070-0	O - RING	418	1137A-0764701-1	COVER-SAFETY			
206	2041100-01030-0	O - RING	419	11393-0764701-1	ADJUST ROD			
207	11376-0254701-1	SPRING	420	2041102-01050-0	O - RING			
208	11375-0084701-1	PLUNGER	421	11330-1174701-2	SAFETY			